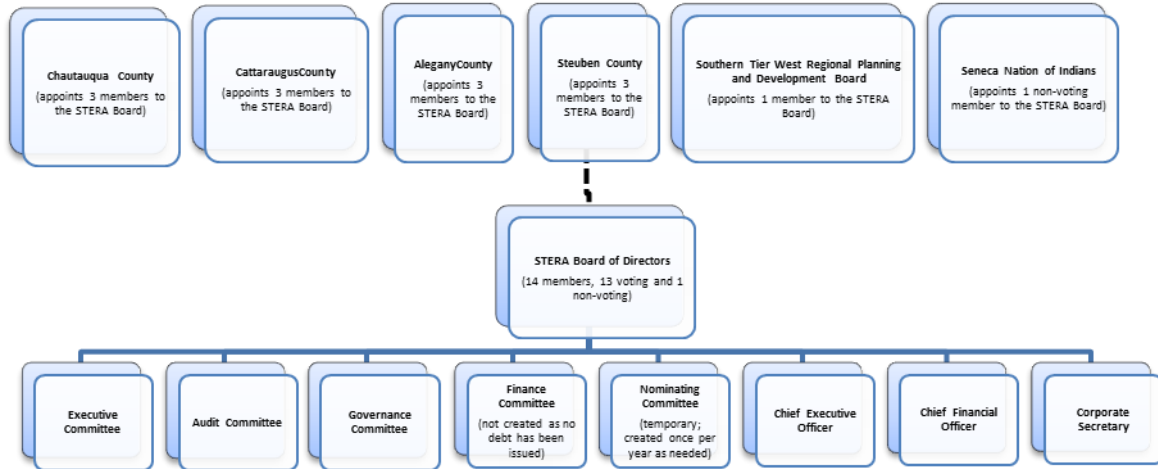


Chautauqua, Cattaraugus, Allegany & Steuben Counties
Southern Tier Extension Railroad Authority
 Center for Regional Excellence, 4039 Route 219, Suite 200, Salamanca, New York 14779
 TEL (716) 945-5301 FAX (716) 945-5550 TDD (716) 945-5301

"This institution is an equal opportunity organization"

Terry Everetts, Chairman
Richard Zink, Chief Executive Officer

STERA Organizational Structure



The six entities indicated in the topmost level of the above chart have legal authority for appointing members to the STERA Board of Directors. This appointment relationship is denoted by a dotted line between the topmost level and the STERA Board of Directors immediately below. However, the appointing entities are not formally a component of STERA’s internal organizational structure.

Other than the Southern Tier West Regional Planning and Development Board’s legal authority to appoint one (1) member to the Authority’s Board, the Authority’s relationship with the Southern Tier West Regional Planning and Development Board is an arm’s length contract relationship relating exclusively to the provision of staffing and administrative services by Southern Tier West to the Authority. Accordingly Southern Tier West is not formally a component of the Authority’s internal organizational structure.

The next level below the STERA Board of Directors contains both committees and Corporate Officers.

STERA’s bylaws provide for five committees; however, STERA has not yet created a Finance Committee, inasmuch as it never has issued any debt. All STERA committee members are members of the STERA Board of Directors. Members and chairpersons of each committee are appointed by the Chairperson of the STERA Board, and appointments are ratified by the STERA Board. The Nominating Committee is a temporary committee that is appointed annually to propose a slate of Board and Corporate Officers for election at the Annual Meeting.

The Corporate Officers (CEO, CFO, and Secretary) report to the STERA Board. These Corporate Officers are not employees of STERA. STERA has no employees.

At present, there are no other internal hierarchical relationships in the STERA organizational structure. STERA also has no subsidiaries or affiliates.